

Strengthening Capacity in USAID Agriculture, Natural Resource Management, and Livelihoods Activities

What is SCALE?

The SCALE Award is a USAID Bureau for Humanitarian Assistance (BHA)-funded capacity strengthening, applied research and knowledge sharing initiative. Implemented by Mercy Corps in collaboration with Save the Children, SCALE works to strengthen the impact, sustainability and scalability of FFP-funded agriculture, natural resource management, and off-farm livelihood activities in both emergency and development contexts.



Photo credit: Kristin Lambert / Mercy Corps

Depending on your role, SCALE can benefit you by:

BHA or Food Security Implementer

- ❖ Developing tools, guides and technical materials to support program implementation
- ❖ Facilitating knowledge sharing events between donors, implementers and researchers
- ❖ Facilitating learning networks and communities of practice

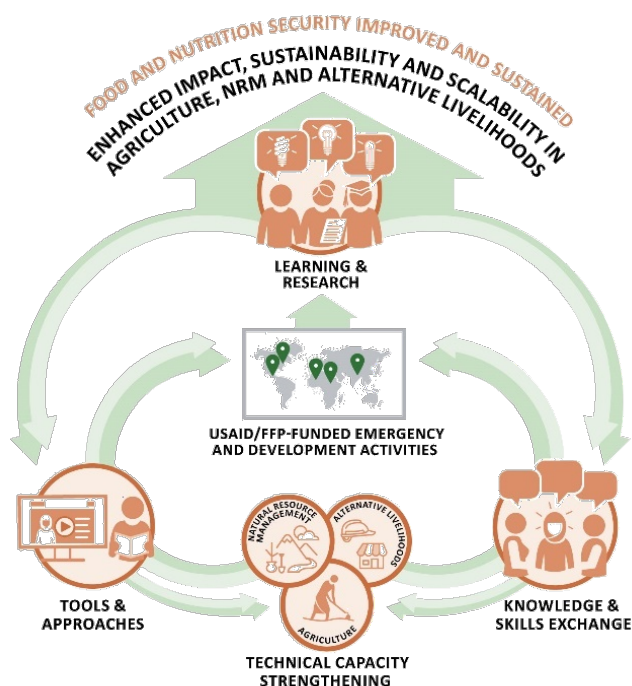
BHA Implementer

- ❖ Capturing programs' best practices, innovations and technologies, and sharing them globally (programs awarded pre-2016)
- ❖ Delivering adult-centered capacity strengthening packages to staff and partners (programs awarded post-2016)

Technical or Research Organization

- ❖ Sharing and adapting technical approaches, methodologies and learning to the development community
- ❖ Facilitating long-term linkages for sustainable learning opportunities

What can SCALE do for BHA partners?



SCALE's aim is to improve the impact, sustainability, and scalability of BHA's activities in agriculture, natural resource management and livelihoods in emergency and development contexts.



Recent Engagements

- ❖ **Trainings:** Social & Behavior Change Training in DRC and Bangladesh, Permagardens and Resilience Design in Smallholder Farming Systems ToT
- ❖ **Research:** Assessment of Climate Services in Nepal, Evidence of Impact Research Fund
- ❖ **Stakeholder consultations:** Survey and Roundtable Discussions on Agriculture and NRM in Emergencies and Youth in Alternative Livelihoods
- ❖ **Tools and Guidance:** Youth-led Market Assessment Guidance
- ❖ **Events & Webinars:** Market-based Approaches to Alternative Livelihoods in Bangladesh and Nepal; Promoting Financial Inclusion in Zimbabwe; Resilient Agriculture Workshop

Contact the SCALE Team to Learn More

- ❖ **Andrea Mottram**, Program Director, amottram@mercy Corps.org
- ❖ **Kristin Lambert**, Agriculture Advisor, klambert@mercy Corps.org
- ❖ **Abby Love**, Agriculture Advisor, alove@mercy Corps.org



Photo credit: Colin Crowley / Save the Children